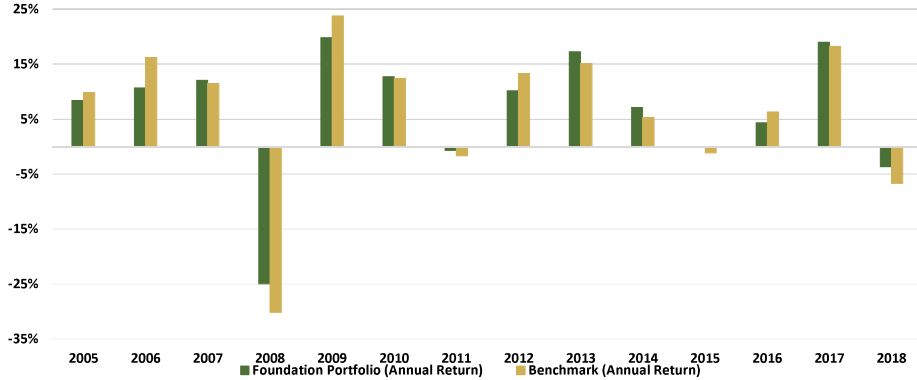




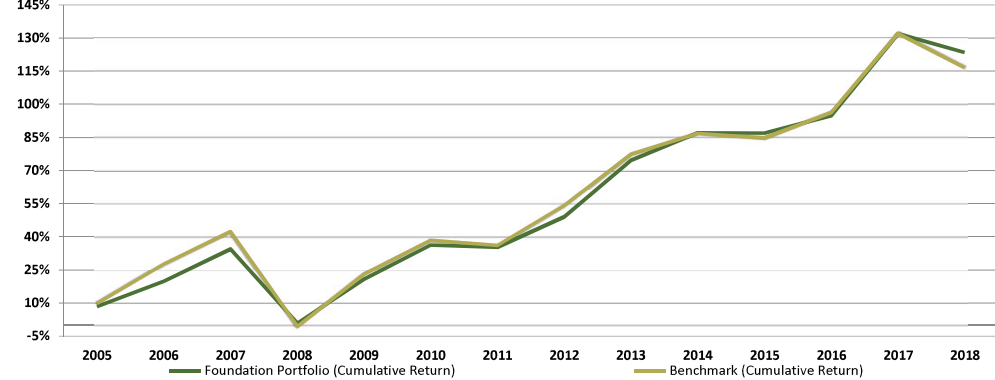
Performance Summary After Investment Management Fees

Average Annual Returns as of December 31, 2018:	Since Inception ¹	Past 10 Years	Past 5 Years	Past 3 Years	Past 1 Year	Year to Date	Past Quarter
Foundation Portfolio	6.02%	8.28%	5.04%	6.13%	-3.65%	-3.65%	-9.87%
Benchmark ²	5.78%	8.09%	4.07%	5.46%	-6.71%	-6.71%	-8.76%

Annual Returns
as of December 31, 2018



Cumulative Returns
as of December 31, 2018



Calendar Returns	2005 ¹	2006	2007	2008	2009	2010	2011	2012	2013	2014	2015	2016	2017	2018
Foundation Portfolio	8.37%	10.69%	12.05%	-24.96%	19.79%	12.72%	-0.65%	10.13%	17.22%	7.12%	-0.12%	4.29%	18.97%	-3.65%
Benchmark*	9.85%	16.22%	11.49%	-30.14%	23.78%	12.45%	-1.71%	13.29%	15.04%	5.32%	-1.15%	6.30%	18.27%	-6.71%

Cumulative Returns	2005 ¹	2006	2007	2008	2009	2010	2011	2012	2013	2014	2015	2016	2017	2018
Foundation Portfolio	8.37%	19.95%	34.40%	0.85%	20.82%	36.18%	35.29%	49.00%	74.65%	87.08%	86.86%	94.87%	131.84%	123.38%
Benchmark*	9.85%	27.66%	42.32%	-0.58%	23.06%	38.39%	36.02%	54.10%	77.28%	86.71%	84.57%	96.19%	132.04%	116.46%

¹The Foundation portfolio inception date is April 1, 2005.

²The Foundation portfolio benchmark is 75% MSCI All Country World Index and 25% Bank of America/Merrill Lynch 7-10 Year Treasury Index.